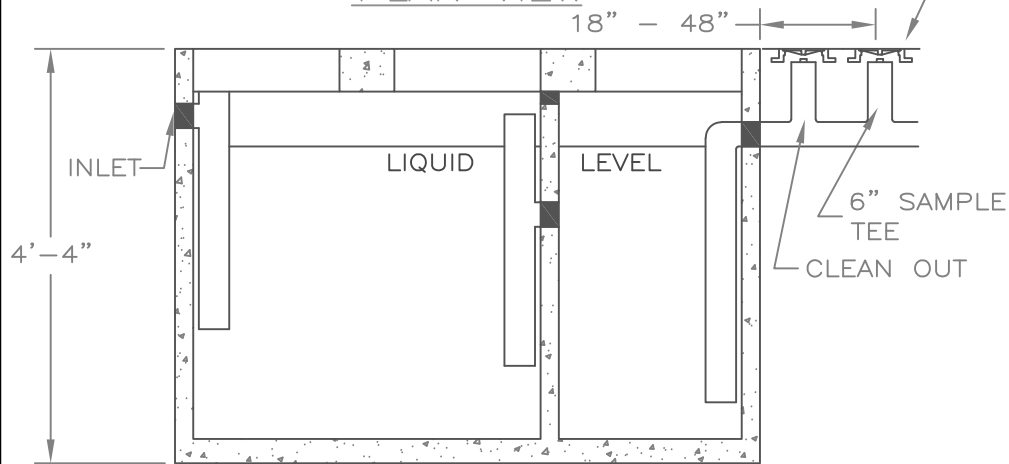


PLAN VIEW

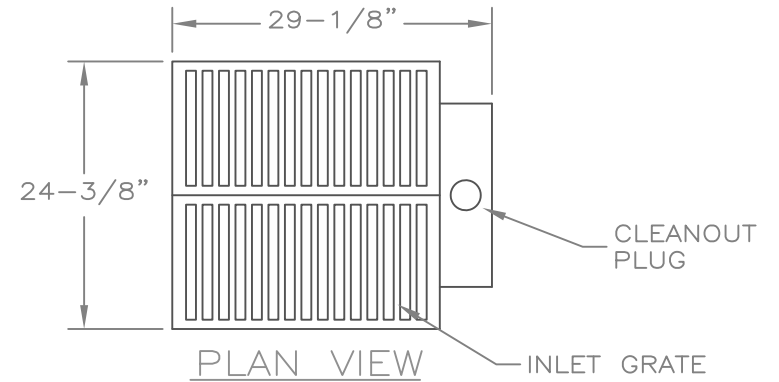


SECTION VIEW

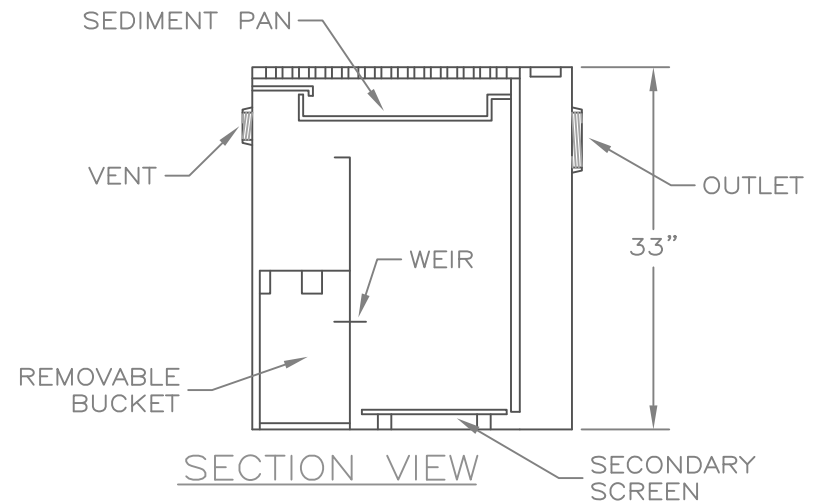
1000 GAL. OIL/WATER SEPARATOR

NOTES:

1. 1000 GAL. OIL WATER SEPARATOR SHALL BE "WILBERT" MODEL # 1627OWID, "PANHANDLE" 1000 GAL., OR APPROVED EQUAL.
2. A 6-INCH SAMPLING TEE WITH A STANDARD SCREW TYPE PLUG SHALL BE PROVIDED IN AN 8"x4" CLEAN-OUT RING & COVER, OLYMPIC M1007 OR APPROVED EQUAL.



PLAN VIEW



SECTION VIEW

INDUSTRIAL/COMMERCIAL FLOOR DRAIN

NOTES:

1. OIL WATER SEPARATOR SHALL BE INSTALLED AS SHOWN ON THE APPROVED PLANS AND IN ACCORDANCE WITH PRETREATMENT REQUIREMENTS.
2. FLOOR DRAINS SHALL BE "ZURN" MODEL # Z-1189 WITH A MINIMUM 100 LB. SLUDGE CAPACITY, OR APPROVED EQUAL.

APPROVED BY:

POST FALLS STANDARDS FOR PUBLIC WORKS CONSTRUCTION

[Signature] 3/19/19
CITY ENGINEER, P.E. DATE:

OIL / WATER SEPARATORS

STANDARD DRAWING
NO. SD 505