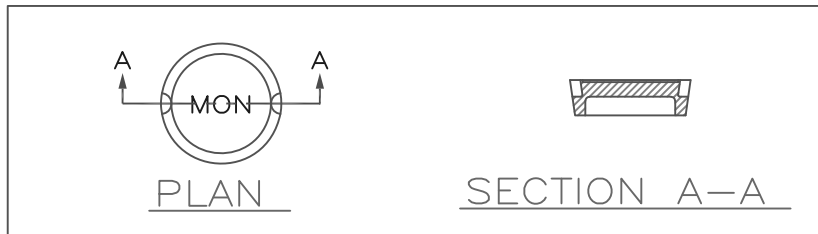
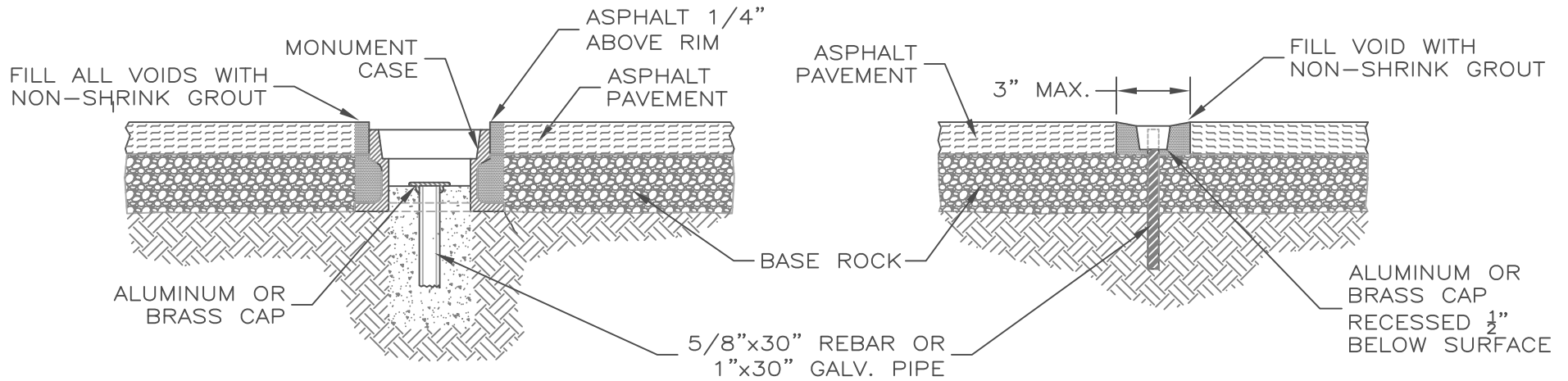


# MONUMENT & CASING SECTION & 1/4 CORNERS

# MONUMENT RESIDENTIAL CENTERLINE



COVER DETAILS

**NOTES:**

1. SURVEY MONUMENTS SHALL BE PLACED IN ACCORDANCE WITH IDAPA 50-1303, AND UTILIZE A BRASS, ALUMINUM, OR OTHER NONFERROUS METAL CAP.
2. MONUMENT CASINGS SHALL BE UTILIZED FOR ALL GOVERNMENT SECTION CORNERS WITHIN THE ROADWAY OR SURVEY MONUMENTS LOCATED WITHIN COLLECTOR OR ARTERIAL ROADWAYS.
3. ASPHALT PAVEMENT SHALL BE CORED WITH A HOLE DIAMETER EQUAL TO THE LARGEST DIAMETER OF THE MONUMENT CASE. ALL VOIDS SHALL BE FILLED WITH NON-SHRINK GROUT.
4. MONUMENT CASE CASTINGS SHALL BE GREY IRON, ASTM A-48, CLASS 25.

APPROVED BY:

POST FALLS STANDARDS FOR PUBLIC WORKS CONSTRUCTION

*[Signature]* 3/19/19  
CITY ENGINEER, P.E. DATE:

## SURVEY MONUMENT DETAIL

STANDARD DRAWING  
NO. SD 2022